

ACTUATOR WITHOUT SPRING RETURN

| DA02N... |



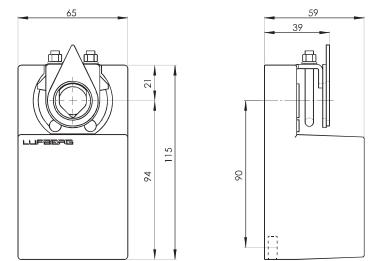
| TYPE OVERVIEW | | | | | | |
|---------------|------------|------------------------|------------|--------------------|---------|--------------------|
| Torque | Controls | Damper surface | Voltage | Auxiliary switches | Weight | Type |
| 2 Nm | 2/3-point | < 0,4 m ² * | 24 V AC/DC | - | 0,49 kg | DA02N24 |
| | | | | 1 SPDT** | 0,53 kg | DA02N24S |
| | Modulating | | | - | 0,50 kg | DA02N24PI |
| | | | | 1 SPDT** | 0,54 kg | DA02N24PIS |
| | 2/3-point | | 230 V AC | - | 0,51 kg | DA02N220 |
| | | | | 1 SPDT** | 0,55 kg | DA02N220S |
| | Modulating | | | - | 0,51 kg | DA02N220PI |
| | | | | 1 SPDT** | 0,55 kg | DA02N220PIS |

| TECHNICAL SPECIFICATION | | | | |
|---------------------------|--|------------------------|--------------|------------------------|
| Type | DA02N24 (S) | DA02N24PI (S) | DA02N220 (S) | DA02N220PI (S) |
| Torque | 2 Nm | | | |
| Running time - motor | 15-25 s | 20-35 s | 15-25 s | 20-35 s |
| Controls | 2/3-point | 0(2)-10V/ 0(4)-20mA | 2/3-point | 0(2)-10V/ 0(4)-20mA |
| Voltage | 24 V AC/DC | | 230 V AC | |
| Frequency | 50/60 Hz (AC) | | | |
| Power consumption | | | | |
| - in operation | 3,0W | 3W | 3,0W | 3,0W |
| - at rest | 0,5W | 0,5W | 0,7W | 0,7W |
| - for wire sizing | 3,0VA | 3,0VA | 3,0VA | 3,0VA |
| Angle of rotation | 0~90° | | | |
| - setting | 0°~90° (stepless) | | | |
| Direction of rotation | direction of rotation chosen with a switch on the actuator | | | |
| Sound power level - motor | <45 dB(A) | | | |
| Feedback signal | - | 0(2)-10V/ 0(4)-20mA | - | 0(2)-10V |
| Electrical connection | actuator includes 1m cable(s) | | | |
| Auxiliary switches | 3 (1.5) A, 230 V | | | |
| Degree of protection | IP54 | | | |
| Protection class | III low voltage | | II | |
| Ambient humidity | 95% RH, without condensation | | | |
| Ambient temperature | -30~+50 °C | | | |
| Non-operating temperature | -40~+70 °C | | | |
| Service life | 60 000 full operating cycles | | | |
| Mechanical connection | | | | |
| - round shaft | from $\varnothing 6$ to $\varnothing 16$ mm | | | |
| - square shaft | from 5x5 to 12x12 mm | | | |
| Manual override | gears disengaged using a button on the actuator cover | | | |
| Norms and standards | Declaration of conformity, ISO, CE, EAC | | | |

* Maximum damper surface is calculated for optimum conditions (without the influence of air flow, pressure difference, etc.).

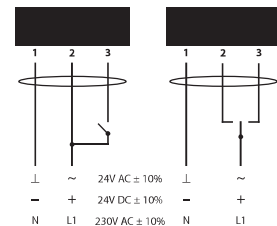
** SPDT (Single-Pole Double-Throw)

DIMENSIONS (mm)

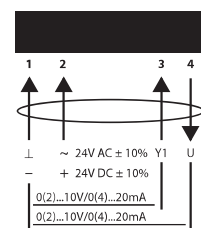


ELECTRIC INSTALLATION

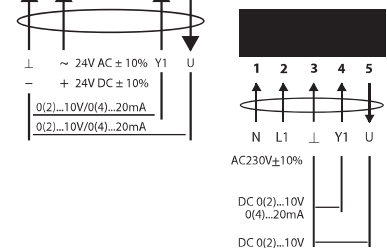
2/3-point



Modulating 24V



Modulating 230V



Auxiliary switches

