

Technical data sheet

Type 233 Non-return valve 03 HP System

Applications and special features



- Special design of the seat with a flexible tightness at low pressure added to a strong seat for tightness at high pressure.
- The accuracy of the axial guiding system guarantees a good centring on the seat.
- Hydraulic profile of the closing system to obtain a minimum head loss and to optimize the hydraulic performance.
- Operates in any position; return spring.
- The variety and the quality of the materials allow a large field of industrial applications to be covered, from the more common installations to the most specialised industrial process.

Technical description

Important notice :

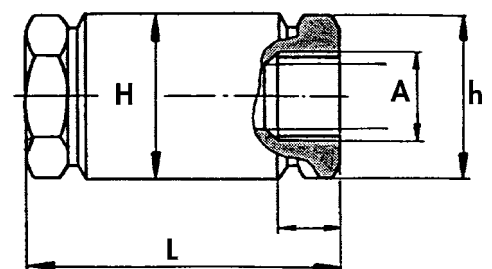
The indicated pressure for the different categories of fluids (L1/L2/G1/G2) is under no condition a guarantee of use. Therefore, it is essential to validate the use of products under given operating conditions.

DN	"	mm	PFA bar	PS - bar				Cat	Ref.	Vvs-nr
				L1	L2	G1	G2			
1/4	6	400	400	400	400	400	3.3	149B3240		
3/8	10	350	350	350	350	350	3.3	149B3241		
1/2	15	300	300	300	300	300	3.3	149B3242		
3/4	20	250	250	250	250	250	3.3	149B3243		
1	25	200	200	200	200	200	3.3	149B3244		
1 1/4	32	150	62	150	0,5	150	3.3	149B3245		
1 1/2	40	100	50	100	0,5	25	3.3	149B3246		
2	50	100	40	100	0,5	20	3.3	149B3247		

- **Connections :** Female/ Female gas : see table
- **Permissible operating pressure PFA - water-**
(for supply, distribution and disposal of water) : See table
- **Maximum permissible pressure PS - other mediums :**
See table
- **θ** Mini. - 20 °C
 Maxi. 100 °C
- **Mediums :** Clear water - Hydrocarbons - Vegetal oils -
Mineral oils - Animal oils - Inorganic acids
- **International construction Standards :** Thread
connections according to NFE 03-005 ISO 228

Overall dimensions

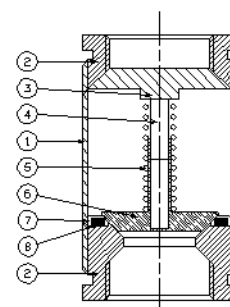
"	A		L	H	h	Weight
	mm	mm	mm	mm	mm	kg
1/4	6	73	24	22	0,17	
3/8	10	76	30	27	0,28	
1/2	15	77	38	32	0,41	
3/4	20	92	48	41	0,78	
1	25	109	57	50	1,26	
1 1/4	32	123	70	65	2,12	
1 1/2	40	141	80	70	3,07	
2	50	164	100	90	5,54	



Technical data sheet Type 233 - Non-return valve

Spare parts list and materials

Nb	Description	Materials	EURO	ANSI
1	CASING	Carbon steel		
2	SEAL	NBR (nitrile)		
3	CONNECTION	Galvanised steel		
4	STEM	Stainless steel	X10CrNiS18.9	AISI 303
5	SPRING	Stainless steel	X10CrNiS18.9	AISI 303
6	CLOSING SYSTEM	Stainless steel	X10CrNiS18.9	AISI 303
7	CLIPS	Brass		
8	SEAL	NBR (nitrile)		



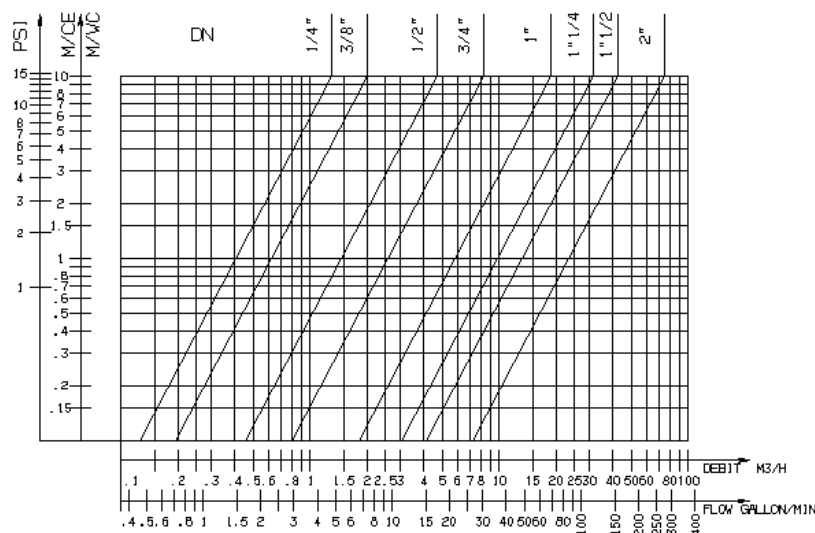
Working principle

DN		Opening pressure - bar ★	Kv	ζ
"	mm		m ³ /H	
1/4	6	0,5	1,30	4,00
3/8	10		2,00	4,00
1/2	15		4,70	3,70
3/4	20		8,30	3,70
1	25		18,75	1,80
1 1/4	32		31,50	1,70
1 1/2	40		42,50	2,30
2	50		75,00	1,80

Direction for use :

- Solid line : Valve completely open
- Dotted line : opening stage of valve

ΔP



Socla can accept no responsibility for possible errors in catalogue, brochures and other printed material. Socla reserve the right to alter its products without notice. This also applies to products already agreed. All trademarks in this material are the property of the respective companies. All right reserved.

Socla SAS

365 rue du lieutenant Putier
71530 VIREY LE GRAND
Postal address : BP 10273
71107 CHALON SUR SAONE Cedex

Tel : 33 3 85 97 42 52
Fax : 33 3 85 97 97 42
<http://www.socla.com>
e-mail: commerfr@socla.com